

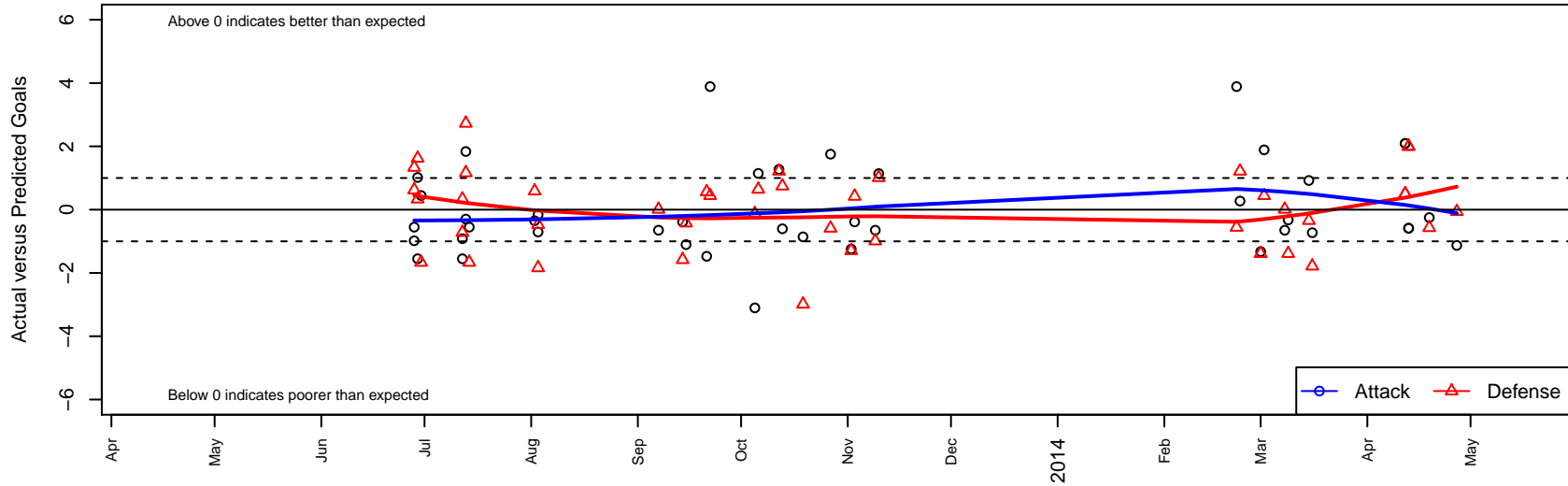
Capital FC Timbers Black Barcelona B99

Capital FC
 Salem, OR
 B99 total strength=1013
 attack=2.64 defense=1.65
 fall league = OPL Second Division U14, OPL D
 notes= was CFC Barcelona
 alt names used:
 Capital FC Timbers Boys 1999 Black
 CFC Barcelona
 CASCADE FUTBOL BARCELONA (OR)

Venues played:
 Capital Cup BU14-15 Silver
 EMFC Adidas Cup Boys U13 U13
 Bend Premier Cup U14/15 Boys Silver U15
 OPL Second Division U14
 OPL Directors Cup Silver U14
 Spr OYS B99 Spring White
 OYS Presidents Cup B99



Capital FC Timbers Black Barcelona B99
 Dots are actual minus expected GF (blue circles) and GA (red triangles).
 Blue line is smoothed change in attack strength. Red is smoothed change in defense strength.



| | date | home | | away | | venue | pred.home | pred.away |
|-------|------------|--|---|--|---|------------------------------|-----------|-----------|
| 26954 | 2014-04-27 | Westside Timbers Copa TS B99 | 3 | Capital FC Timbers Black Barcelona B99 | 0 | OYS Presidents Cup B99 | 2.94 | 1.13 |
| 26611 | 2014-04-19 | Eastside Timbers Black B99 | 3 | Capital FC Timbers Black Barcelona B99 | 1 | OYS Presidents Cup B99 | 2.43 | 1.25 |
| 26366 | 2014-04-13 | Capital FC Timbers Black Barcelona B99 | 0 | Santos FC Chivas B99 | 2 | OYS Presidents Cup B99 | 0.59 | 4.00 |
| 26369 | 2014-04-13 | Capital FC Timbers Black Barcelona B99 | 0 | Santos FC Chivas B99 | 2 | OYS Presidents Cup B99 | 0.59 | 4.00 |
| 26115 | 2014-04-12 | Capital FC Timbers Black Barcelona B99 | 3 | WAFC Real Madrid B99 | 3 | OYS Presidents Cup B99 | 0.91 | 3.50 |
| 26119 | 2014-04-12 | Capital FC Timbers Black Barcelona B99 | 3 | WAFC Real Madrid B99 | 3 | OYS Presidents Cup B99 | 0.91 | 3.50 |
| 25026 | 2014-03-16 | Westside Timbers Mundial B99 | 3 | Capital FC Timbers Black Barcelona B99 | 1 | Spr OYS B99 Spring White | 1.22 | 1.73 |
| 24727 | 2014-03-15 | Washington Timbers Crimson B99 | 1 | Capital FC Timbers Black Barcelona B99 | 3 | Spr OYS B99 Spring White | 0.66 | 2.08 |
| 24331 | 2014-03-09 | Vancouver West FC United B99 | 4 | Capital FC Timbers Black Barcelona B99 | 1 | Spr OYS B99 Spring White | 2.61 | 1.33 |
| 24088 | 2014-03-08 | Capital FC Timbers Black Barcelona B99 | 2 | BSC Portland Gold B99 | 1 | Spr OYS B99 Spring White | 2.65 | 1.01 |
| 23762 | 2014-03-02 | Capital FC Timbers Black Barcelona B99 | 7 | PCU Black B99 | 0 | Spr OYS B99 Spring White | 5.11 | 0.44 |
| 23569 | 2014-03-01 | Capital FC Timbers Black Barcelona B99 | 0 | Vancouver West FC United B99 | 4 | Spr OYS B99 Spring White | 1.33 | 2.61 |
| 23316 | 2014-02-23 | Capital FC Timbers Black Barcelona B99 | 2 | Westside Timbers Mundial B99 | 0 | Spr OYS B99 Spring White | 1.73 | 1.22 |
| 23083 | 2014-02-22 | PCU Black B99 | 1 | Capital FC Timbers Black Barcelona B99 | 9 | Spr OYS B99 Spring White | 0.44 | 5.11 |
| 18114 | 2013-11-10 | CUSC Avalanche B99 | 0 | Capital FC Timbers Black Barcelona B99 | 4 | OPL Directors Cup Silver U14 | 1.01 | 2.86 |
| 17838 | 2013-11-09 | Capital FC Timbers Black Barcelona B99 | 2 | BSC Portland Gold B99 | 2 | OPL Directors Cup Silver U14 | 2.65 | 1.01 |
| 17294 | 2013-11-03 | Capital FC Timbers Black Barcelona B99 | 1 | Washington Timbers Forrest B99 | 1 | OPL Directors Cup Silver U14 | 1.39 | 1.42 |
| 16910 | 2013-11-02 | Newberg SC Dragons B99 | 4 | Capital FC Timbers Black Barcelona B99 | 0 | OPL Directors Cup Silver U14 | 2.70 | 1.24 |
| 16275 | 2013-10-27 | Capital FC Timbers Black Barcelona B99 | 4 | Crossfire Oregon Black B99 | 2 | OPL Second Division U14 | 2.25 | 1.41 |
| 15102 | 2013-10-19 | CUSC Avalanche B99 | 4 | Capital FC Timbers Black Barcelona B99 | 2 | OPL Second Division U14 | 1.01 | 2.86 |
| 14443 | 2013-10-13 | Capital FC Timbers Black Barcelona B99 | 4 | Foothills SC Lumberjacks B99 | 0 | OPL Second Division U14 | 4.61 | 0.75 |
| 14061 | 2013-10-12 | Capital FC Timbers Black Barcelona B99 | 3 | Westside Timbers Mundial B99 | 0 | OPL Second Division U14 | 1.73 | 1.22 |
| 13398 | 2013-10-06 | Capital FC Timbers Black Barcelona B99 | 4 | HSC Fusion B99 | 0 | OPL Second Division U14 | 2.86 | 0.64 |
| 13042 | 2013-10-05 | Hood River Dynamos White B99 | 1 | Capital FC Timbers Black Barcelona B99 | 2 | OPL Second Division U14 | 0.87 | 5.10 |
| 11483 | 2013-09-22 | Capital FC Timbers Black Barcelona B99 | 9 | PCU Black B99 | 0 | OPL Second Division U14 | 5.11 | 0.44 |
| 11142 | 2013-09-21 | Washington Timbers Burgundy B99 | 1 | Capital FC Timbers Black Barcelona B99 | 0 | OPL Second Division U14 | 1.56 | 1.47 |
| 10504 | 2013-09-15 | Capital FC Timbers Black Barcelona B99 | 0 | United SA Potros B99 | 3 | OPL Second Division U14 | 1.10 | 2.58 |
| 10166 | 2013-09-14 | Washington Timbers Forrest B99 | 3 | Capital FC Timbers Black Barcelona B99 | 1 | OPL Second Division U14 | 1.42 | 1.39 |

| date | home | | away | | venue | pred.home | pred.a |
|------------|--|---|--|---|---|-----------|--------|
| 2013-09-07 | BSC Portland Gold B99 | 1 | Capital FC Timbers Black Barcelona B99 | 2 | OPL Second Division U14 | 1.01 | 2.6 |
| 2013-08-03 | Eastside Timbers Black B98 | 3 | Capital FC Timbers Black Barcelona B99 | 0 | Bend Premier Cup U14/15 Boys Silver U15 | 2.53 | 0.7 |
| 2013-08-03 | Capital FC Timbers Black Barcelona B99 | 1 | Central Coast Newport United B99 | 4 | Bend Premier Cup U14/15 Boys Silver U15 | 1.16 | 2.1 |
| 2013-08-02 | Capital FC Timbers Black Barcelona B99 | 1 | Albany FC Arsenal B99 | 2 | Bend Premier Cup U14/15 Boys Silver U15 | 1.35 | 2.5 |
| 2013-07-14 | ETFC Celtic Red –was White B99 | 3 | Capital FC Timbers Black Barcelona B99 | 1 | EMFC Adidas Cup Boys U13 U13 | 1.33 | 1.5 |
| 2013-07-13 | Central Coast Newport United B99 | 1 | Capital FC Timbers Black Barcelona B99 | 3 | EMFC Adidas Cup Boys U13 U13 | 2.16 | 1.1 |
| 2013-07-13 | Milan SC Red B99 | 5 | Capital FC Timbers Black Barcelona B99 | 0 | EMFC Adidas Cup Boys U13 U13 | 7.73 | 0.3 |
| 2013-07-12 | Capital FC Timbers Black Barcelona B99 | 0 | ETFC Celtic Black –was Blue B99 | 5 | EMFC Adidas Cup Boys U13 U13 | 0.92 | 4.2 |
| 2013-07-12 | Capital FC Timbers Black Barcelona B99 | 0 | ETFC Celtic Red –was White B99 | 1 | EMFC Adidas Cup Boys U13 U13 | 1.55 | 1.3 |
| 2013-06-30 | ETFC Celtic Red –was White B99 | 3 | Capital FC Timbers Black Barcelona B99 | 2 | Capital Cup BU14–15 Silver | 1.33 | 1.5 |
| 2013-06-29 | Capital FC Timbers Black Barcelona B99 | 0 | ETFC Celtic Red –was White B99 | 1 | Capital Cup BU14–15 Silver | 1.55 | 1.3 |
| 2013-06-29 | Capital FC Timbers Black Barcelona B99 | 2 | THUSC Argon B99 | 1 | Capital Cup BU14–15 Silver | 0.98 | 2.6 |
| 2013-06-28 | ETFC Celtic Red –was White B99 | 0 | Capital FC Timbers Black Barcelona B99 | 1 | Capital Cup BU14–15 Silver | 1.33 | 1.5 |
| 2013-06-28 | Capital FC Timbers Black Barcelona B99 | 0 | THUSC Argon B99 | 2 | Capital Cup BU14–15 Silver | 0.98 | 2.6 |